



## Project Information

Builder-Owner  
Gemeinde Schwarzenberg

Location  
Schwarzenberg

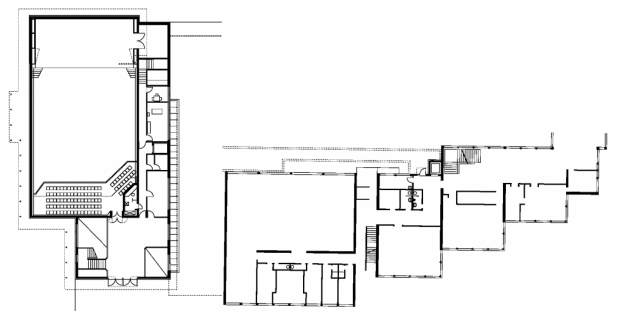
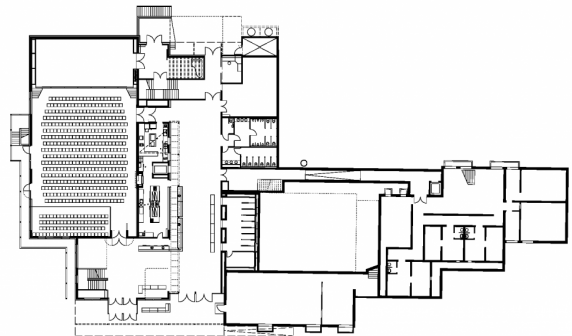
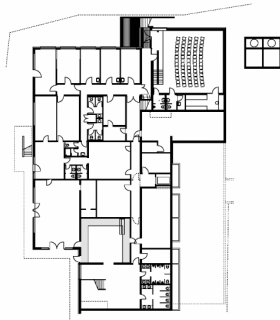
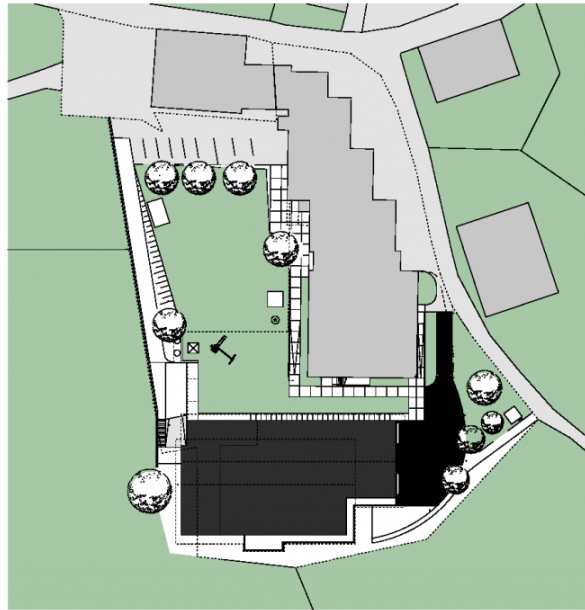
Completion  
2001

Projectfacts  
NGF 2.363,00 m<sup>2</sup>, BGF 2.782,00 m<sup>2</sup>,  
BRI 12.794 m<sup>3</sup>

## Gentle expansion to a precious festival hall.

The original work by DI Bartle Moosbrugger, carried out in 1984, had become inadequate for a smooth execution of various activities, especially the Schubertiade festival. Therefore the hall was extended by seven meters and the side rooms, especially the foyer, generously expanded. The architectural challenge was to keep the quality of the existing buildings, and to add the new rooms gently, without altering the overall image of the hall, which now has a high profile. This explains the restrained and serving design approach in the newly added parts.





## Project Stakeholders

### Project Leader

Arch. DI Roland Wehinger

### Colleague

Benjamin Miatto

### Cost Planning

Bmst. Ing Norbert Kaufmann

Project Stakeholders

## Structural Engineering

M+G Ingenieure, DI Josef Galehr,  
Feldkirch

## Heating Ventilation and

### Sanitary Planning

Dür Werner GmbH, Lauterach

## Electronics Planning

Manuel Krekeler, Rankweil

## Building Physics

DI Dr. Lothar Künz ZT GmbH,  
Hard

## Akustik

Ing. Karl Brüstle, Dornbirn

## Awards

Menschengerechtes Bauen  
2002

## Rights

Text Hermann Kaufmann +  
Partner ZT GmbH, Englisch:  
Bronwen Rolls  
Foto Hermann Kaufmann +  
Partner ZT GmbH