



Project Information

Builder-Owner
Pfarre Bizau

Location
Bizau

Completion
1995

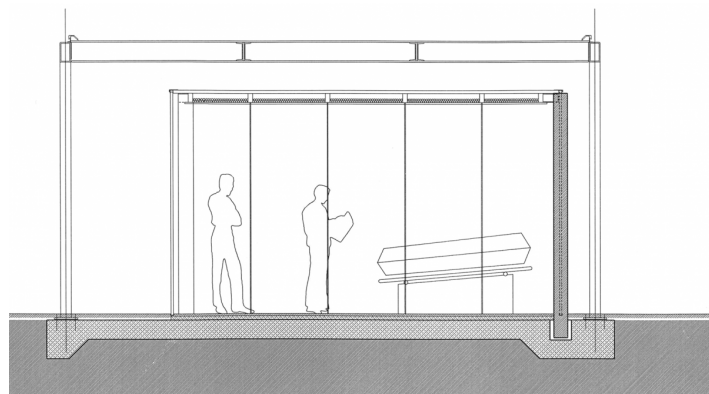
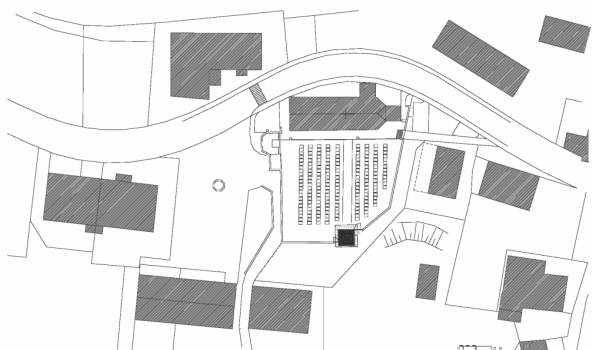
Combining light, timber, glass and steel to create a space of comfort for mourners.

The integration of a 'Aufbahrungsraumes' into a historic cemetery complex is an interesting task, especially as an answer to the eternal questions surrounding restoration and development of historical buildings must be given.

The design idea behind the 'Chapel of Rest' in Bizau has its starting point in dealing with the issue of death. The last resting place in this world is to be a space of hope and light. It should make it clear that earthly life is only transitory, an indeterminate path to the 'light'. The living, who say goodbye to the deceased, should feel the symbolism of the room, and take it as a comfort.

A flat roof floating on four steel columns protects a glass cube of stained glass, with a three-part larch timber door and a stone wall created by local sculptor Herbert Meusburger. The design is sparse and reserved. The entrance lies exactly in the axis of the side entrance of the church, becoming an integrated part of the entire complex.





Project Stakeholders

Colleague

Gerold Leuprecht

Structural Engineering

DI Ingo Gehrler, Höchst

Art

Herbert Meusburger, Bizau

Rights

Text Hermann Kaufmann +
Partner ZT GmbH, Englisch:
Bronwen Rolls
Foto Ignacio Martinez