



## Project Information

### Builder-Owner

Wohnbauselbsthilfe Vorarlberg,  
Bregenz

### Location

Rankweil

### Completion

2017

### Project facts

n.b.ar. H1 421,68 m<sup>2</sup>, H2 456,43 m<sup>2</sup>

GFA H1 541 m<sup>2</sup>, H2 577,9 m<sup>2</sup>

GBV H1 1616 m<sup>3</sup>, H2 1709,5 m<sup>3</sup>

### Energy

H1 33 kwh,

H2 32 kwh

## Value created through a positive neighbourly environment

The second phase of the project Transfer Wohnraum Vorarlberg enables a meaningful reconfiguration and an increase in housing in an area that was once mainly single-family homes in Rankweil. The site is located conveniently at the confluence of a narrow access lane and the feeder route to the centre.

Two restrained constructions follow the grain of the environment and create a total of eleven residential units. The volumes are perpendicular to each other, the single-storey cube of a bicycle store seals the routes on both foot and bike, to which also the entrances are orientated. Therefore, on the inside of the small ensemble, a protected green space is created in which vegetables and flower beds are planted and the children are allowed to romp in their playground.

»In the beginning we were mainly concerned about the prejudices of the general public; we did not want to realise the buildings until they had been accepted. Neighbourhood, encouraging neighbourly attitudes, and the added value this brings to the environment were important to the concept from the beginning.«

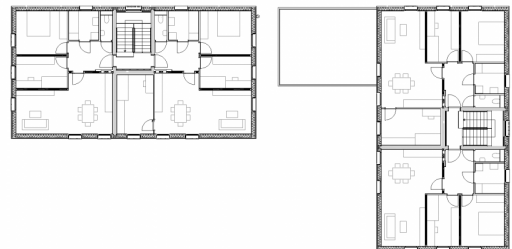
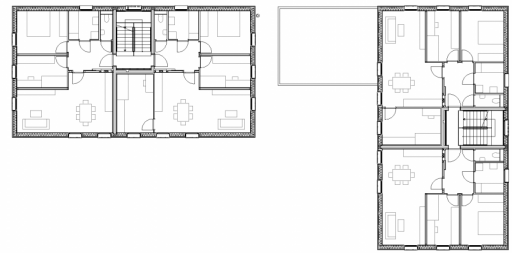
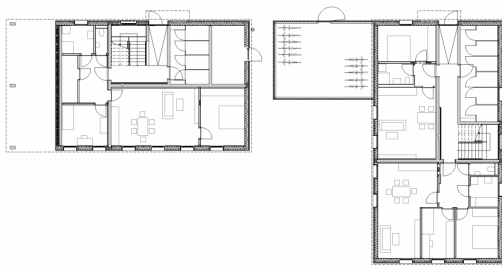
explains co-founder Andreas Postner

Due to the variable apartment sizes and room combinations, the needs of different user groups are met. The economical interior openings create space for storage in the entrance areas to save on expensive basements. For cost reasons balcony systems are omitted, but generous French windows guarantee a light and sunny atmosphere for the interiors.

The buildings could be delivered in a simple, but solid, standard timber frame construction. Solid timber ceilings are created by local companies; special emphasis was placed on very low energy metrics. This prototype demonstrates a low-cost housing model, which is both a good integration into the existing neighbourhood and one that considers the regional value chain.









## Project Stakeholders

### Cooperation

Konrad Duelli, Andreas Postner

### Project Leader

Konrad Duelli

### Building Labourer Coordination

#### Laws

FF-Bauleitungsbüro GmbH,  
Dornbirn

### Structural Analysis

Mader + Flatz Baustatik ZT  
GmbH, Götzis

### Building Physics

DI Bernhard Weithas GmbH -  
Ingenieurbüro für Bauphysik,  
Lauterach

### Electronics Planning

Maldoner Elektrotechnik  
e.U., Lauterach

### Heating Ventilation and

#### Sanitary Planning

Markus Stolz GmbH & Co KG,  
Feldkirch

### Geotechnical Engineering

BGG Consult Dr. Peter Waibel  
ZT-GmbH, Hohenems

### Drainage Planning

Rudhardt + Gasser  
Ziviltechniker, Bregenz

### Timber construction

Sohm Holzbautechnik GmbH

## Rights

Text Tina Mott, Englisch:

Bronwen Rolls

Foto Christa Engstler

