



#### Project Information

**Builder-Owner**  
Martin und Anne Nigsch, Zürich

**Location**  
Feldkirch-Tisis

**Completion**  
2016

**Project facts**  
NGF 269,1 m<sup>2</sup>, BGF 361,5 m<sup>2</sup>,  
BRI 1151,11 m<sup>3</sup>  
Energie 34 kWh/m<sup>2</sup>a

#### Sculpted cube with a view and the sun.

The small family home sits on a gently sloping incline to the northwest; the terrain is followed in the placement of a semi-basement level. The two upper floors are designed as a succinct timber cube on the slightly cantilevered ceiling slab.

In order to grant both a wide view of the Appenzell Alps and to optimise the sun light, the consistently rhythmic openings are oriented in two directions. The clean lines of the sculptural volume are emphasised by the use of delicate silver fir, on the side that will be weathered, its patina already shimmers with a dull silver sheen.

Despite the dense space program, light, bright materials inside create an atmosphere of lightness and space.

Nigsch, Feldkirch-Tisis

Nigsch, Feldkirch-Tisis

Image not found or type unknown

Nigsch, Feldkirch-Tisis

Image not found or type unknown

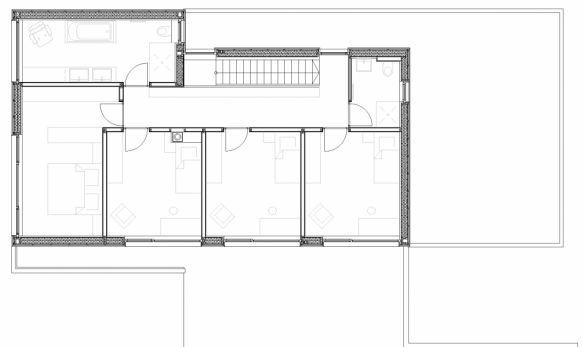
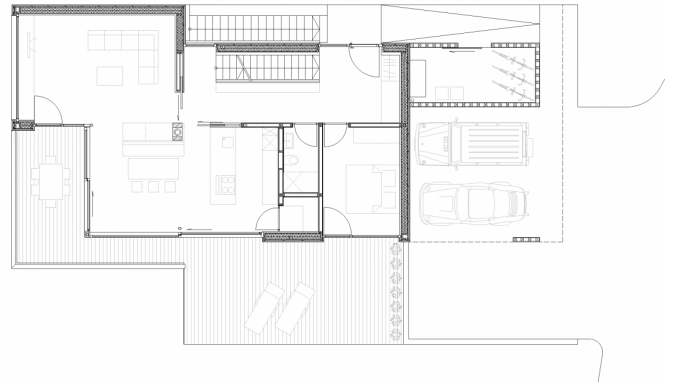
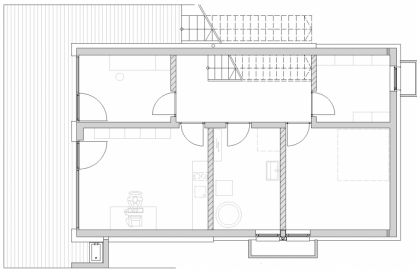
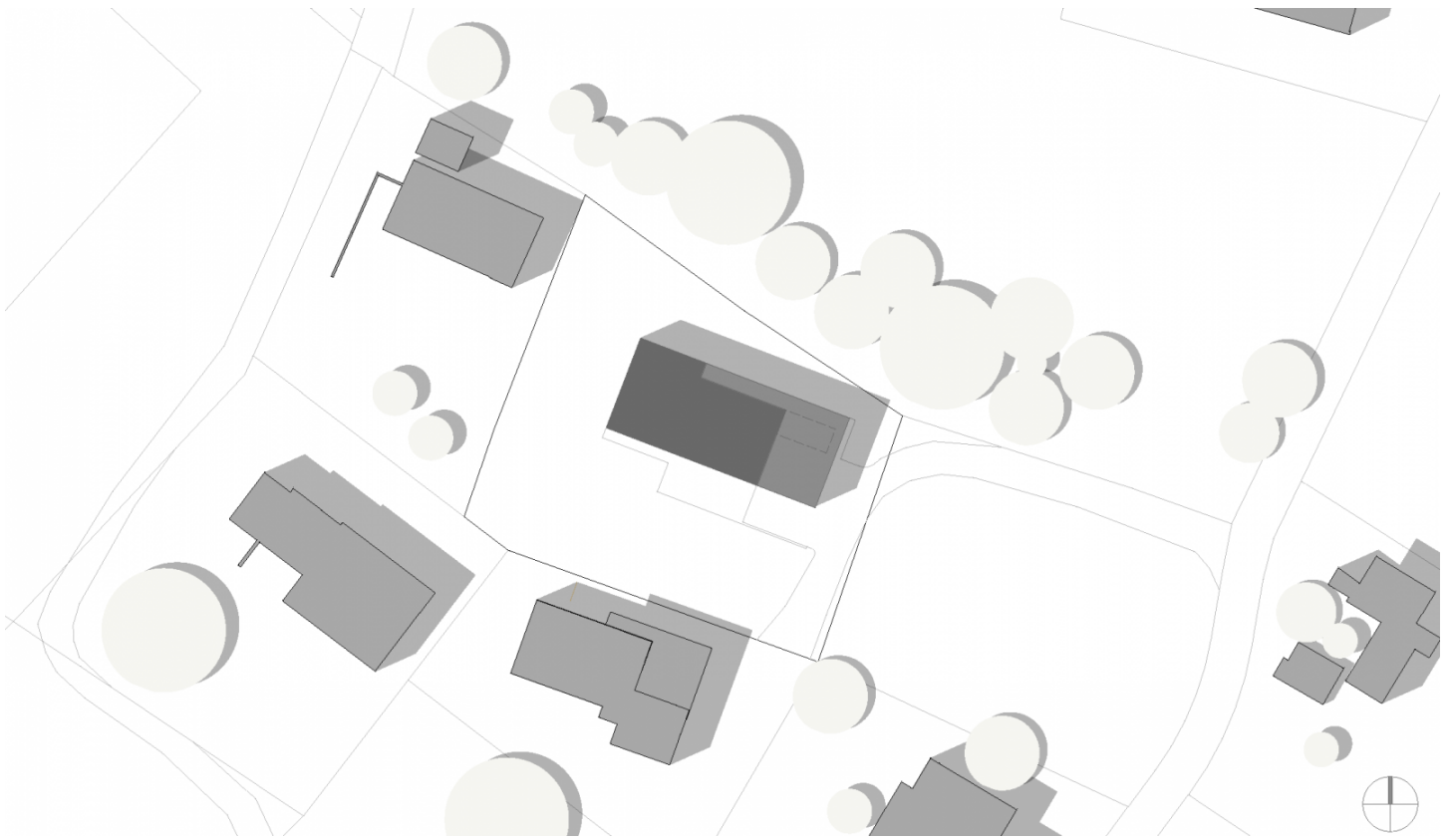
Nigsch, Feldkirch-Tisis

Image not found or type unknown

Nigsch, Feldkirch-Tisis

Image not found or type unknown

Nigsch, Feldkirch-Tisis



## Project Stakeholders

### Project Leader

Arch. DI Roland Wehinger

### Colleague

Jörg Braun

DI (FH) Juliane Wiljotti

### Cost Planning

Arch. DI Roland Wehinger

Project Stakeholders

## Building Site Manager

Bm Bernhard Metzler, Fetz

Holzbau GmbH, Egg

## Structural Engineering Timber

### Construction

Bm Bernhard Metzler, Fetz

Holzbau GmbH, Egg

## Structural Engineering

### Concrete Construction

Mader + Flatz Baustatik ZT

GmbH, Bregenz

## Heating Ventilation and

### Sanitary Planning

Sigfried Steurer Installationen/

Energietechnik GmbH,

Andelsbuch

## Electronics Planning

Elektro Willi GesmbH. & Co KG,

Andelsbuch

## Building Physics

Thomas Schwarz - WSS,

Wärme- & Schallschutztechnik

Schwarz, Frastanz

## Rights

Text Tina Mott

Foto Norman Radon

