

**Project Information**

**Builder-Owner**  
Melanie & Francesco Lino

**Location**  
Montagnola Schweiz, Tessin

**Completion**  
2017

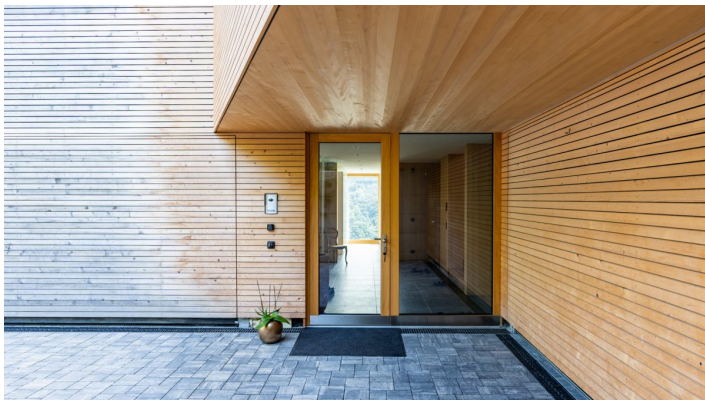
**Project facts**  
NGF 451,5 m<sup>2</sup>, BGF 573,5 m<sup>2</sup>,  
BRI 2000,74 m<sup>3</sup>

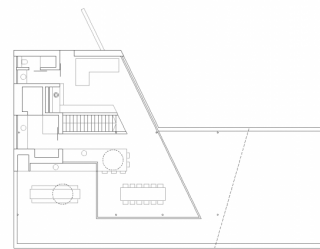
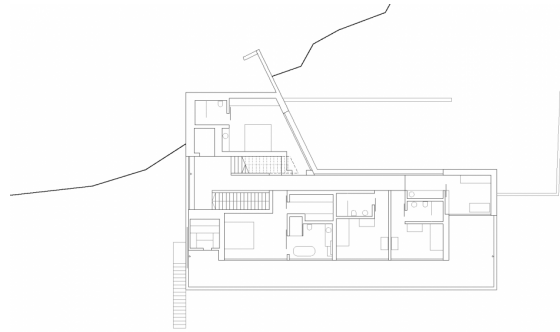
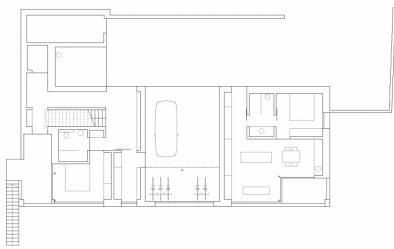
**A lake view from the sundeck.**

The expressive structure sits on a steep southeast slope in the Ticino village of Montagnola, surrounded by stately villas in Mediterranean vegetation. The determining design parameters are the orientation to the sun and the wide view over Lake Lugano.

For a secure foundation, a massive reinforced concrete base was poured into the steep ground, on top of which stands a construction of timber walls and cantilevered laminated ceilings.

The development of the three-storey volume takes place from the lowest floor, through the precise formulation of the exterior spaces. The building interweaves with its surroundings. The interior has an open and bright atmosphere; finely worked panelling made of fir gives the generous rooms feeling and warmth.





## Project Stakeholders

### Project Leader

Jörg Braun  
Arch. DI Roland Wehinger

### Colleague

Jörg Braun  
Andreas Ströhle MSc  
DI Corinna Bader  
Arch. Luciano Bernardini, Locarno

### Building Site Manager

Holzbau Fetz GmbH, Egg  
Arch. Massimo Pizza, Caslano

### Main Contractor

Holzbau Fetz GmbH, Egg

## Project Stakeholders

### Building Physics

Kuster + Partner AG, Chur

### Structural Analysis

merz kley partner ZT GmbH,  
Dornbirn

### Heating Ventilation and

### Sanitary Planning

VERZERI & ASMUS Sagl, Caslano

### Electronics Planning

Mauro Spinedi, Mezzovico-Vira

### Geologist

Studio di Geologia Geotecnica  
Geofisica Idrogeologia Ing.  
Pedrozzi & Associati SA,  
Pregassona-Lugano

## Rights

Text Tina Mott  
Foto Arch. DI Roland  
Wehinger

