



Project Information

Builder-Owner

Errichtergemeinschaft: VOGEWOSI +
Gemeindeverband Bezau-Mellau-
Reuthe

Location

Bezau

Completion

2017

Projectfacts

NGF 1690,9 m², BGF 1382,4 m²,
BRI 6606,3 m³,
WFL Neubau 758,11 m²,
Altbau 333,38 m²
Energie 17 kWh/m²a

The balance of tradition and change.

For more than a hundred years the distinctive Walderhaus has shaped the district of Ellenbogen. In order to secure the continued existence of these traditional buildings this listed farm was converted into a contemporary centre for assisted living. For structural reasons, and because of the extensive space program, it was necessary to replace the administrative section with a slightly longer new building.

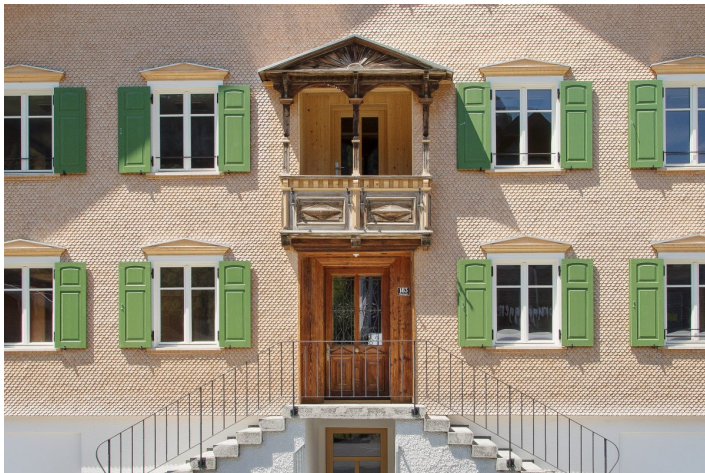
Since the traditional uniqueness's of the building type should be maintained, mainly the shingle and the rhythmic and recessed window construction towards the front of the building, a compact, perpendicularly interconnected volume was connected at the rear building. This part of the building is built according to current ecological and construction guidelines in mixed (hybrid) construction at a passive house standard. It contains nine clearly structured, accessible and generously illuminated residential units that open up to garden areas or loggias to create a sustainably managed communal landscape.

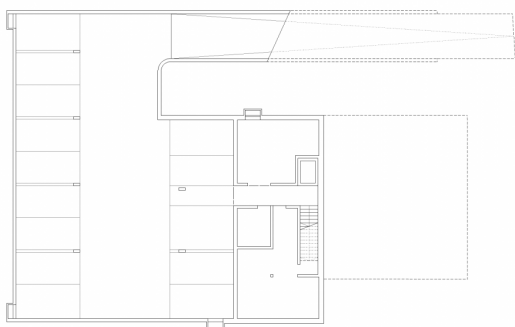
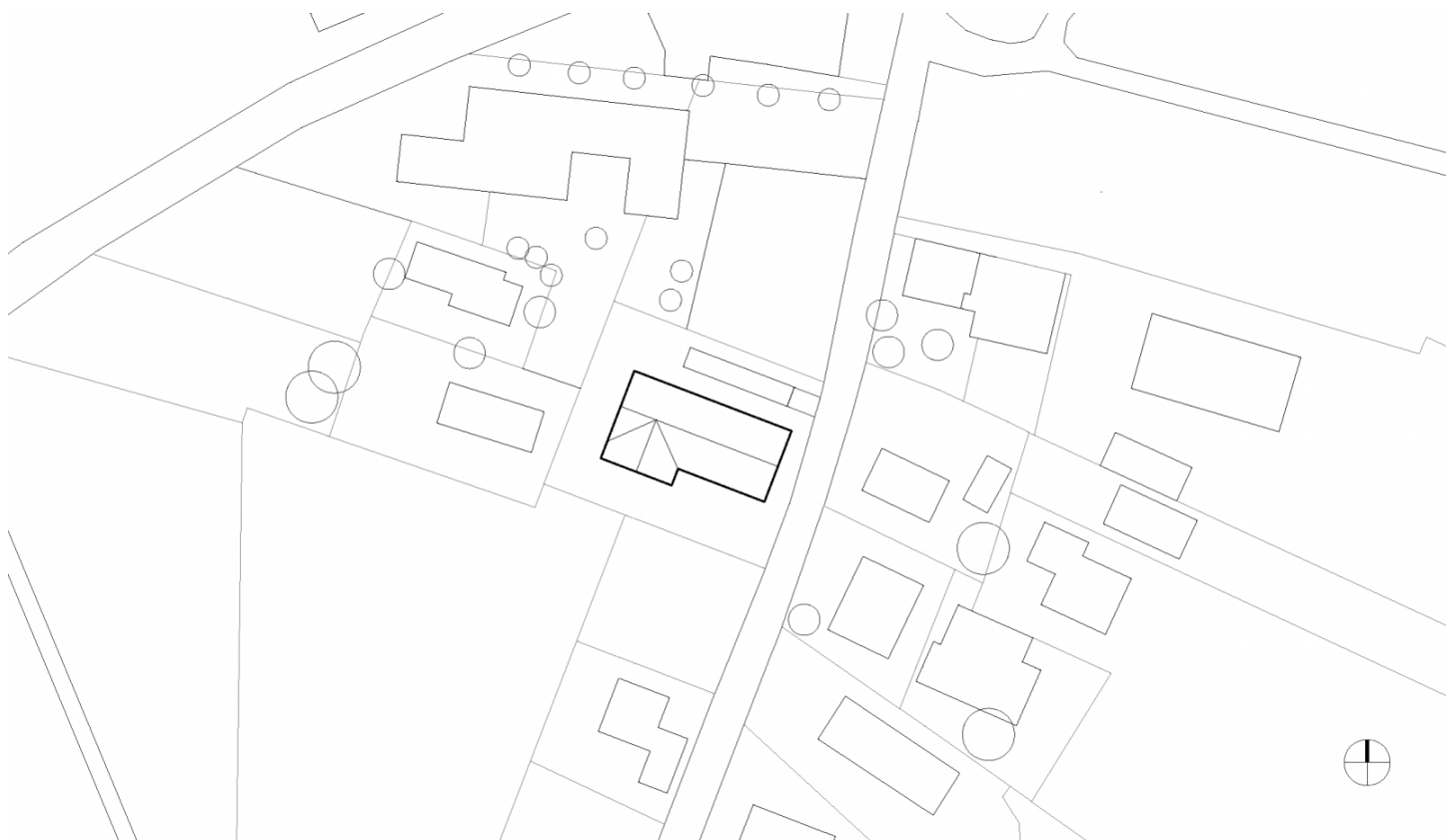
The holdings could be carefully renovated and thermally refurbished to accommodate various social amenities. After consultation with the Federal Monuments Office, original doors, panelling and parquet floors were removed, restored and carefully put back into place. The windows however, were replaced by new replicas made in silver fir.

»Our goal was to preserve the charm of the old and bring it into harmony with the functional requirements of today.«

Univ.-Prof. Arch. DI Hermann Kaufmann

Two-thirds of the trades were carried out by craftsmen from the Bregenzerwald, as regional added value is an important factor in the project. The entire volume is heated by district heating from renewable energy, a controlled ventilation system is used for heat recovery and the large-scale solar system on the roof supports the hot water requirements. In the outdoor area, a small garden offers all the inhabitants a sense of nature and recreation, because "A cottage garden is part of a real Walderhaus".





Project Stakeholders

Project Leader

DI Wolfgang Schwarzmann

Colleague

Jörg Braun

Wolfgang Hammerer

Cost Planning

VOGEWOSI, Dornbirn

Building Site Manager

V-Bau - BM Armin Thoma,

Bartholomäberg

Project Stakeholders

Structural Engineering

Concrete Construction

Mader & Flatz Baustatik ZT

GmbH, Bregenz

Structural Engineering Timber

Construction

merz kley partner ZT GmbH,

Dornbirn

Heating Ventilation and

Sanitary Planning

Technisches Büro Herbert Roth,

Lauterach

Electronics Planning

elplan Lingg Elektroplanungs

GmbH, Schoppernau

Building Physics

WSS Wärme - und

Schallschutztechnik Schwarz,

Frastanz

Landscape Planning

LandRise.Landschaftsplanung,

Egg

Rights

Text Tina Mott

Foto Albrecht Schnabel

Text Englisch: Bronwen Rolls

