



Project Information

Builder-Owner
AJE GmbH, Lochau

Location
Lauterach

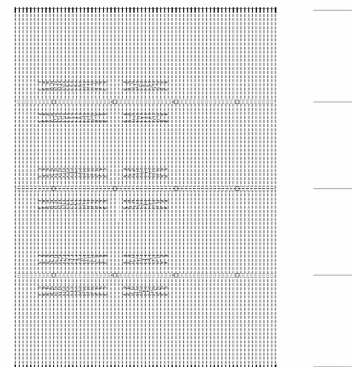
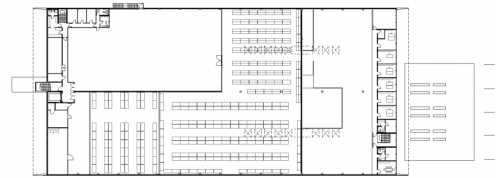
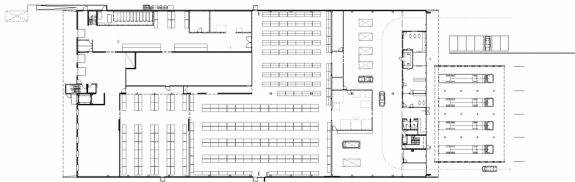
Completion
2012

Project facts
n.b.ar. 7.230 m², GFA 10.710 m²,
GBV 42.900 m³

Light, transparent strength and functionality.

As part of the relocation to a former food wholesale centre, the tyre service hall was built on the car park to the front of the building. Here tyre service work can be carried out on trucks, sheltered by a 'flying' roof from 3 sides. This roof faces the entrance's glass facade, making it necessary to make the building as light and transparent as possible. The main beams are laid on clamped reinforced concrete columns, to which the very narrow sub-beams, which are only 6 cm wide, are attached. These secondary beams lie directly on supports in the side facade area. The windbreak of this wall is accomplished with acrylic glass plates clamped in the pillars.





Project Stakeholders

Project Leader

DI Stefan Hiebeler

Colleague

DI (FH) Thomas Weitershagen

DI Thomas Fußenegger

Cost Planning

Bmst. Gerold Hämmerle

Building Site Manager

Bmst. Gerold Hämmerle

Structural Engineering

Mader & Flatz, Bregenz

Heating Ventilation and

Sanitary Planning

Pratzner Haustechnik GmbH,

Jenbach

Electronics Planning

i-TEC Industrieelektrik GmbH,

Lauterach

Rights

Text Hermann Kaufmann +

Partner ZT GmbH, Englisch:

Bronwen Rolls

Foto Norman Radon

