



## Project Information

### Client

Wälderhaus Immobilien GesmbH,  
Bezau

### Location

Bezau

### Finalisation

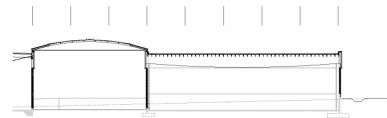
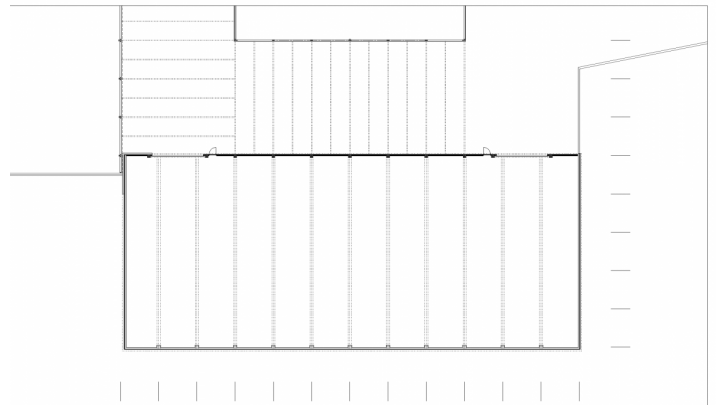
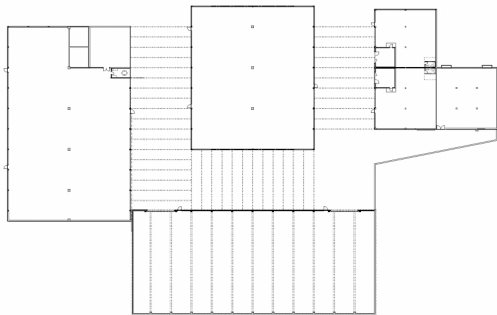
2011

### Project Facts

n.b.ar. 2.210 m<sup>2</sup>, GFA 2.220 m<sup>2</sup>,  
GBV 20.170 m<sup>3</sup>  
Energy Unheated







## Project Stakeholders

### Project Leader

Mathias Simma - Kaufmann  
Bausysteme

### Colleague

Martin Rümmele

### Main Contractor

Kaufmann Bausysteme GmbH,  
Reuthe

### Structural Engineering Timber Construction

merz kley partner ZT GmbH,  
Dornbirn

## Rechte

Foto Bruno Klomfar

