



### Project Information

Builder-Owner  
Fetz Waltraud

Location  
Egg

Completion  
2012

Project facts  
n.b.ar. 651,36 m<sup>2</sup>, GFA 836 m<sup>2</sup>,  
GBV 7.942 m<sup>3</sup>  
Energy 38,07 kWh/m<sup>2</sup>a

**A carpenter's timber family home that combines old character with modern spaces.**

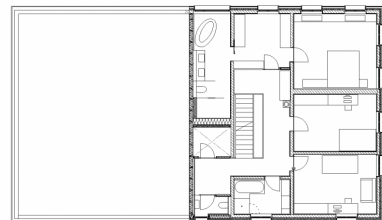
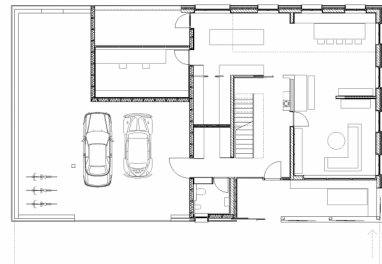
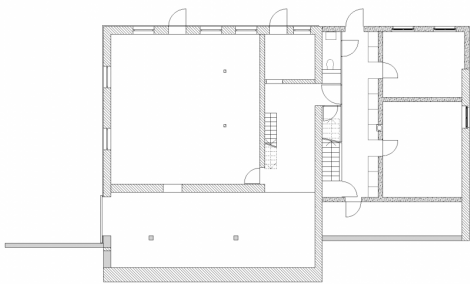
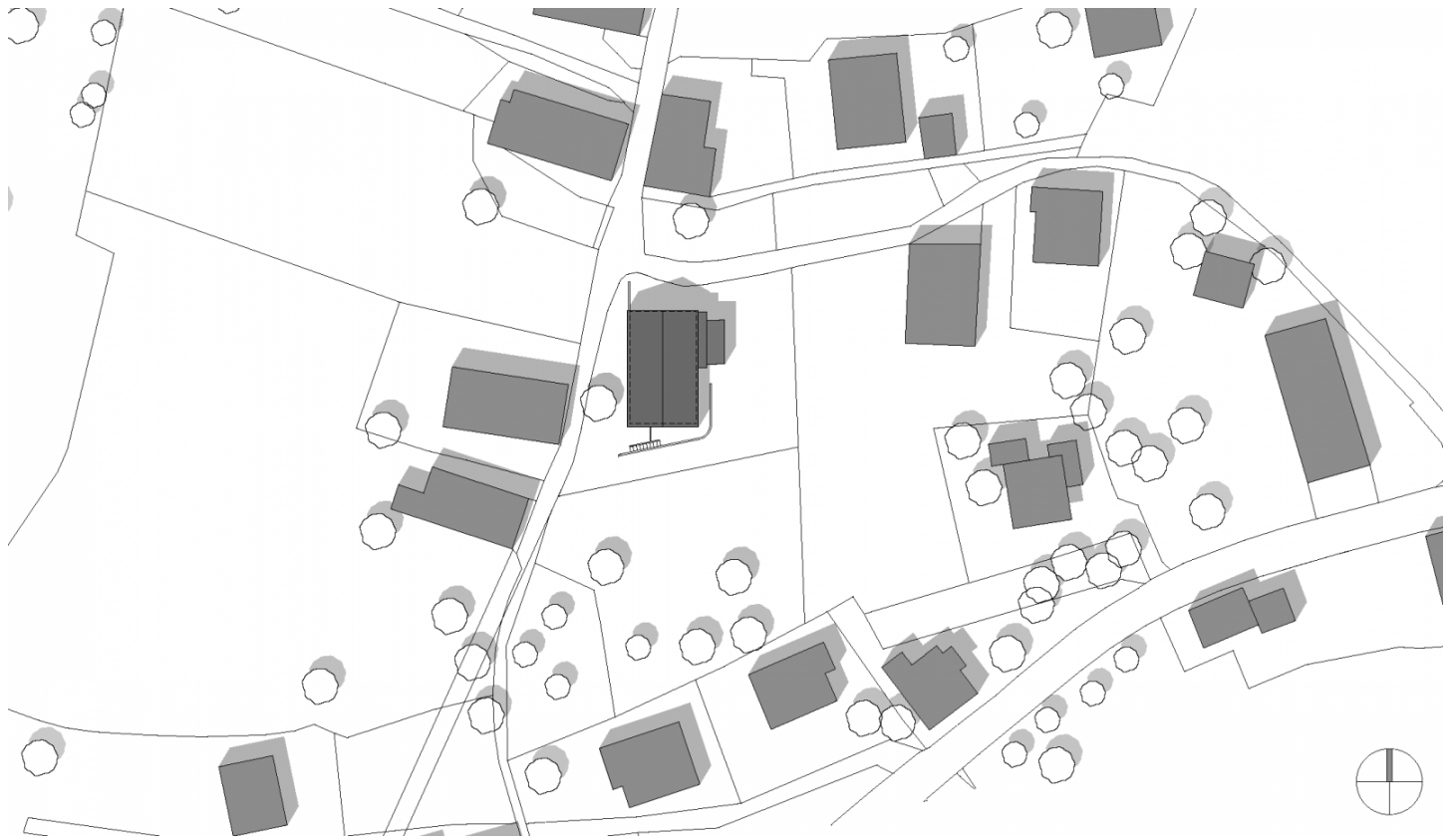
»Our goal was to combine the old and the new in such a way that the character of the old Wälderhaus was preserved while achieving a high quality of living. To reach this goal, we were in multiple conversations and discussions with Hermann Kaufmann, their suggestions and ideas where an indispensable help.«

Builder Jodok Fetz

**When a carpenter builds their own home, great things are possible.**

The alignment of the building is altered to regain the characteristic shape of the Bregenzerwald House. The core, without the roof, of the main house is simply lifted onto the prepared new foundations. This results in much more space. The house is also reorganised; now in the basement area, where there used to be stables, is the cellar with a laundry room. The timber staircase is moved and incorporated into the beam structure. It is made by the client, as are the white fir panelling and wooden floors. In the west, the office literally stretches into the business wing, as does the loggia with an unobtrusive viewing slit. Transitions are also seen in the shingle facade of the building on the gable front, which flows into vertical timber cladding.





## Project Stakeholders

### Project Leader

DI Marlies Sofia

### Colleague

Dipl.Arch. (FH) Claudia Greussing

DI (FH) Sandra Endres

### Cost Planning

Fetz Holzbau GmbH, Egg, Fetz

Jodok

### Structural Engineering

Fetz Holzbau GmbH, Egg

### Heating Ventilation and

### Sanitary Planning

Hubert Metzler Hausinstallateur

GmbH, Egg

### Electronics Planning

Strom Jos - Jodok Meusburger,

Egg

### Building Physics

Fetz Holzbau GmbH, Egg

### Landscape Planning

Land Rise, DI Maria-Anna

Moosbrugger, Egg

### Light Design

Waltraud Fetz, Architekten

Hermann Kaufmann ZT GmbH

## Rights

Text Hermann Kaufmann +

Partner ZT GmbH, Englisch:

Bronwen Rolls

Foto Norman Radon