



Project Information

Builder-Owner

Magistrat der Stadt Wetzlar

Location

Wetzlar

Completion

2011

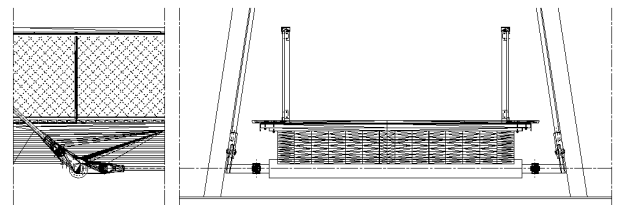
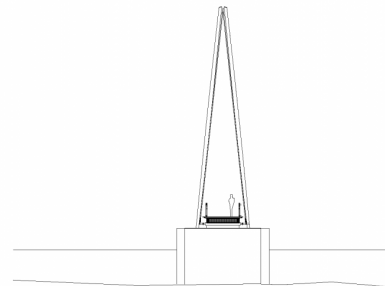
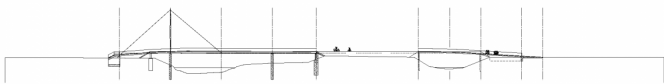
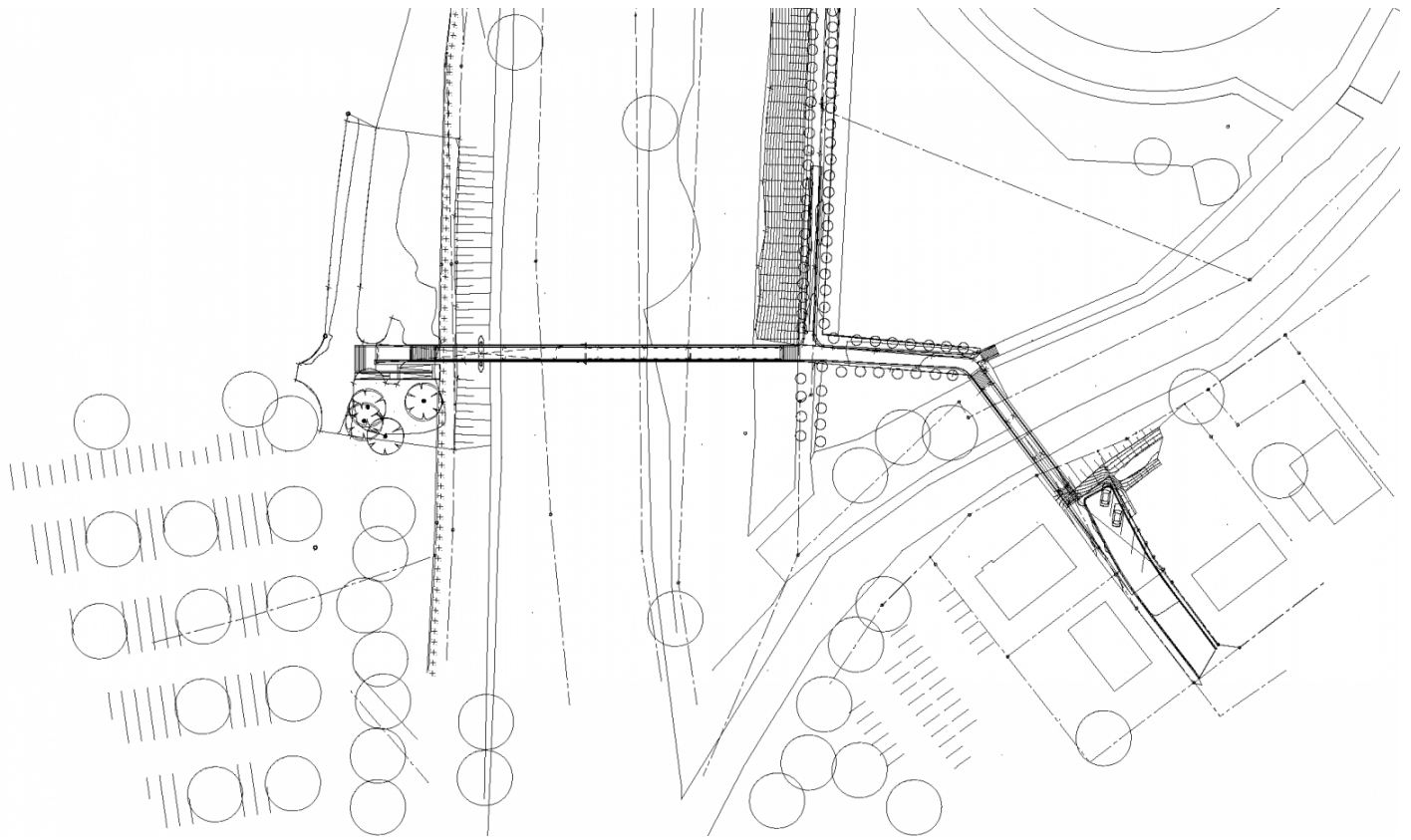
Creating accessible and beautifully functional bridges to support regional prosperity.

For the occasion of the Hessentag 2012 (a large festival and fair), the city of Wetzlar gave the order to replace the old wooden bridge system. During the Hessentag 2012, which is important for the region, the bridge system connects the event locations and has to offer an accessible route. Accessibility had to be central to the design of the bridges, with clear passage widths from 2.50 m to 3.00 m, enabling the movement of the increased pedestrian traffic during the event.

The main suspension bridge is a total of approx. 73 m in length. The tension ropes are at a 45 ° angle to the 18.0 m high "A" shaped tower that is made of round steel upright props. The supporting layer of the bridge consists of 55 cm glued laminated timber, which is protected by the projecting 51mm thick decking plate. The road surface consists of 6 cm asphalt on 2 layers of bitumen waterproofing. The smaller bridge is described as an arch. It spans over 25 m and is designed as a pure block glued laminated timber beam with a thickness of 65 cm. The bearing layer and road surface match those of the main bridge. The timber structure is protected from rain and moisture, which promises a long life with low maintenance costs.

The lighting concept was realised with energy-saving LED bulbs in the handrail. Only the tower is illuminated from below.





Project Stakeholders

Project Leader

DI Claus Hainzmeier

Colleague

DI Eugen Keler

Cost Planning

Bauart Konstruktions GmbH &
Co KG, München

Structural Engineering

Bauart Konstruktions GmbH &
Co KG, München

Awards

Holzbaupreis Hessen 2011
2011 (Anerkennung)

Rights

Text Hermann Kaufmann +
Partner ZT GmbH, Englisch:
Bronwen Rolls
Foto Klaus-Rainer Klebe

