



**Project Information**

Builder-Owner  
Böhler Fenster GmbH, Wolfurt

Location  
Wolfurt

Completion  
2009

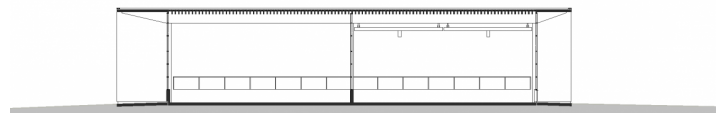
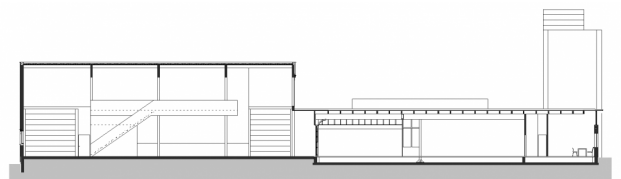
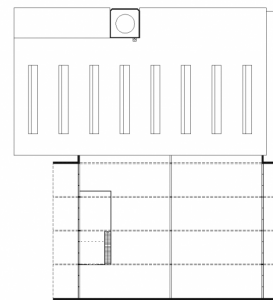
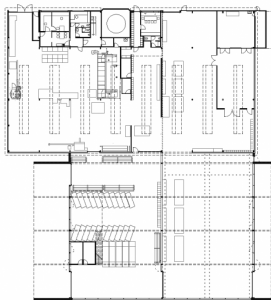
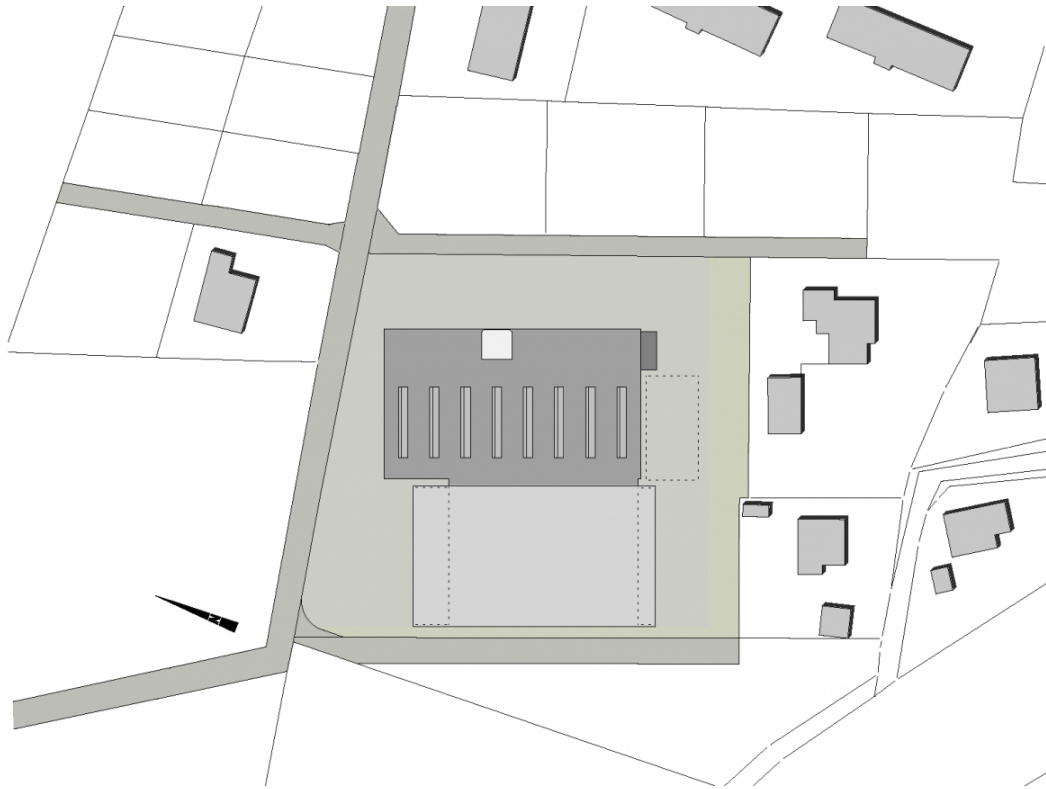
Project facts  
n.b.ar. 1.121,54 m<sup>2</sup>, GFA 1.269,80 m<sup>2</sup>,  
GBV 4.909,60 m<sup>3</sup>

**The next phase of a company's development,  
realised in timber.**

The new hall represents a big developmental step for the traditional company Böhler Fenster in Wolfurt, Austria. A new product line requires a production space with a greater height and the new hall clearly demonstrates this.

The hall extension connects to the existing building via a simple join, creating a formal contrast. The large trusses are made from a simple glued laminate, which is also visible from the outside. A metallic outer skin protects the timber construction.





## Project Stakeholders

### Project Leader

DI (FH) Sandra Endres

### Colleague

Martin Rümmele

### Cost Planning

PROJEKT & PLAN Wolfgang

Elmenreich GmbH, Au

### Building Site Manager

PROJEKT & PLAN Wolfgang

Elmenreich GmbH, Au

### Structural Engineering

Mader & Flatz Ziviltechniker

GmbH, Bregenz

### Heating Ventilation and

### Sanitary Planning

GMI Ingenieure, Dornbirn

### Electronics Planning

Rist & Co GmbH, Wolfurt

### Building Physics/Acoustics

WSS Wärme- und

Schallschutztechnik Schwarz,

Frastanz

## Rights

Text Hermann Kaufmann +

Partner ZT GmbH, Englisch:

Bronwen Rolls

Foto Architekten Hermann

Kaufmann