



Project Information

Builder-Owner

REMUS Raiffeisen Immobilien
Leasing GmbH, Egg

Location

Egg

Completion

2010

Project facts

NGF 2.195 m², BGF 2.052 m²,
BRI 7.264 m³
Energie 17 kWh/m²a

New headquarters of Raiffeisenbank Mittelbregenzewald.

In the middle of the village of Egg in the Bregenzewald, Austria the new headquarters of the Raiffeisenbank will be built. One of the goals of the new building is to build a simple, but functional building with a strong connection to the Bregenzewald region.

»When people speak of the Bregezerwald, they often use the words 'plain' or 'simple'. That is increasing wrong. To describe the Bregenzewald, at least in terms of architecture, people should say 'grand', 'incredible' and 'ingenious'. This definitely applies to the bank in Egg.«

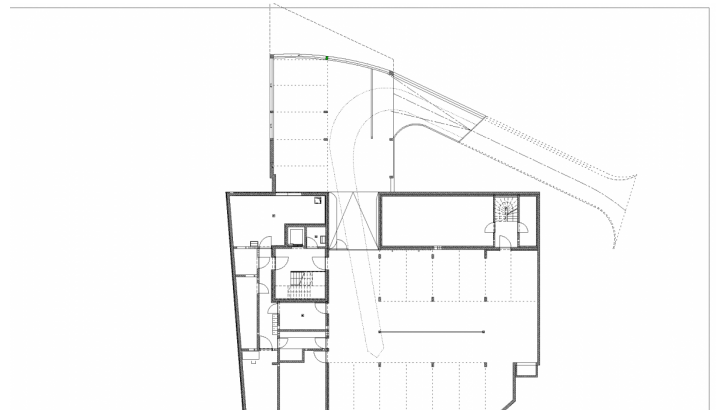
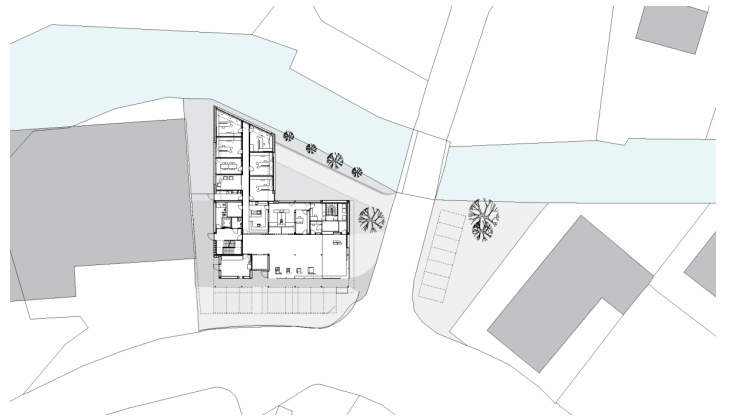
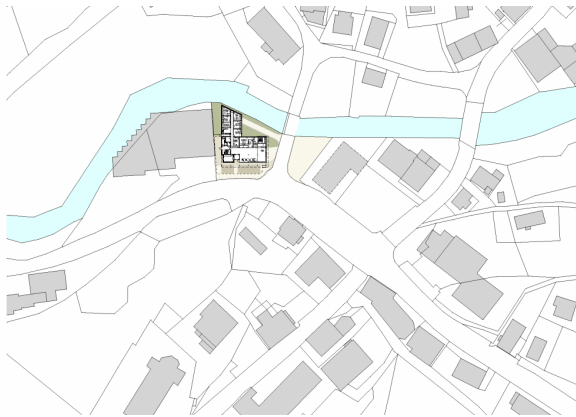
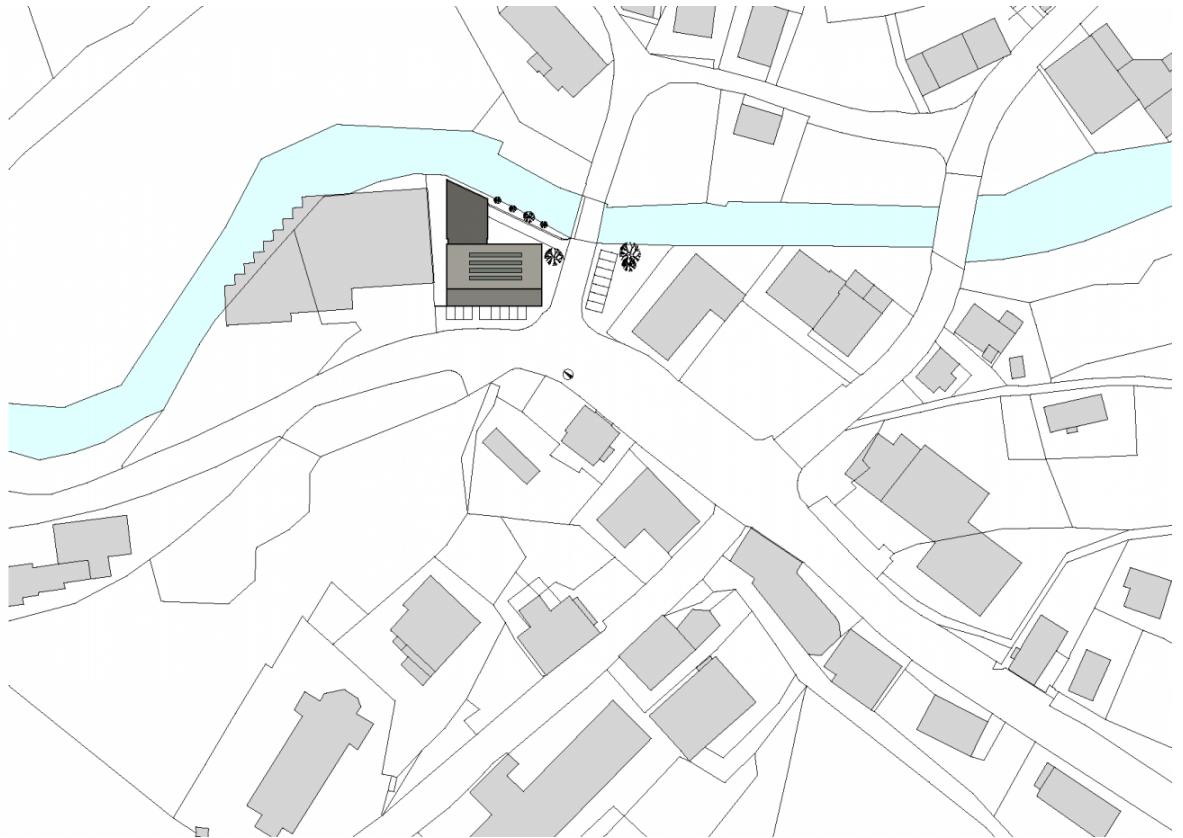
Best of Austria 2010/2011

The plan is to build a 4-storey, fully timber-framed bank with a total floor space of more than 1,400 m². The individual storeys were assigned to the respective business processes. The ground floor serves the private customer care in a generously sized customer reception. The first floor accommodates the corporate customer service and the executive board, while the administration can be found on the second floor. The third floor is intended as a social area for employees or for training. There is a spacious roof terrace that offers a generous panoramic view of Egg.

The upper floors are connected by spacious airy walkways, which direct the light into the centre of the building. The facade is mostly executed in untreated larch shingles. The timber outer walls, which are more than 40 cm thick, are insulated with cellulose. Inside the insulation is either hemp or, where necessary, mineral wool. In terms of sustainability, domestic timber varieties are the focus of the interior design. Untreated domestic silver fir for walls, fixtures and doors, and the oak furniture compliments and accentuates this.

Another focus is to build a sustainable and high-quality building. By using a photovoltaic system and the connection to the local heating network, an energy balanced is achieved and the building is emission-free over the year. An overall sophisticated energy concept reduces the energy consumption to a minimum, so that a Passive House standard is almost reached. The added value for the Bregenzewald region is the fact that approximately 85% of the work was awarded to Bregenzewald craftsmen or to customers of the bank.





Project Stakeholders

Project Leader

DI (FH) Sandra Endres

Colleague

Arch. DI Roland Wehinger

ADE Guillaume E. Weiss

Building Site Manager

Morscher Bau- &

Projektmanagement GmbH, Mellau

Project Stakeholders

Structural Engineering

merz kley partner GmbH,

Dornbirn

Heating Ventilation and

Sanitary Planning

Planungsteam E-Plus GmbH,

Egg

Electronics Planning

elplan Lingg Elektroplanungs

GmbH, Schoppernau

Building Physics

WSS Wärme- und

Schallschutztechnik Schwarz,

Frastanz

Geotechnical Engineering

3P Geotechnik ZT GmbH,

Bregenz

Awards

Holzbaupreis Vorarlberg

2011 (Preis - Innovative

Holzanwendung)

Rights

Text Hermann Kaufmann +

Partner ZT GmbH, Englisch:

Bronwen Rolls

Foto Bruno Klomfar

