



Project Information

Builder-Owner

Biomasse Heizwerk Zug GmbH & Co
KEG, Lech

Location

Zug

Completion

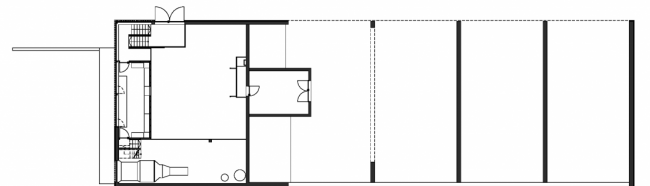
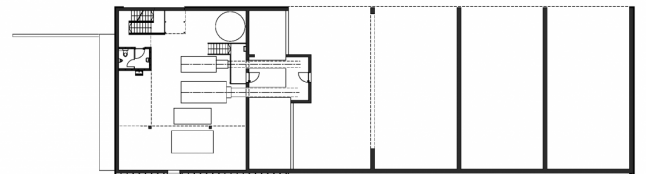
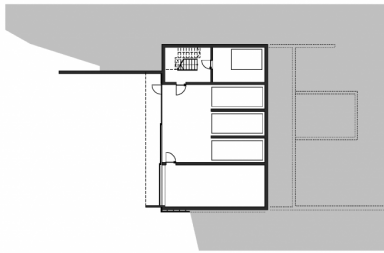
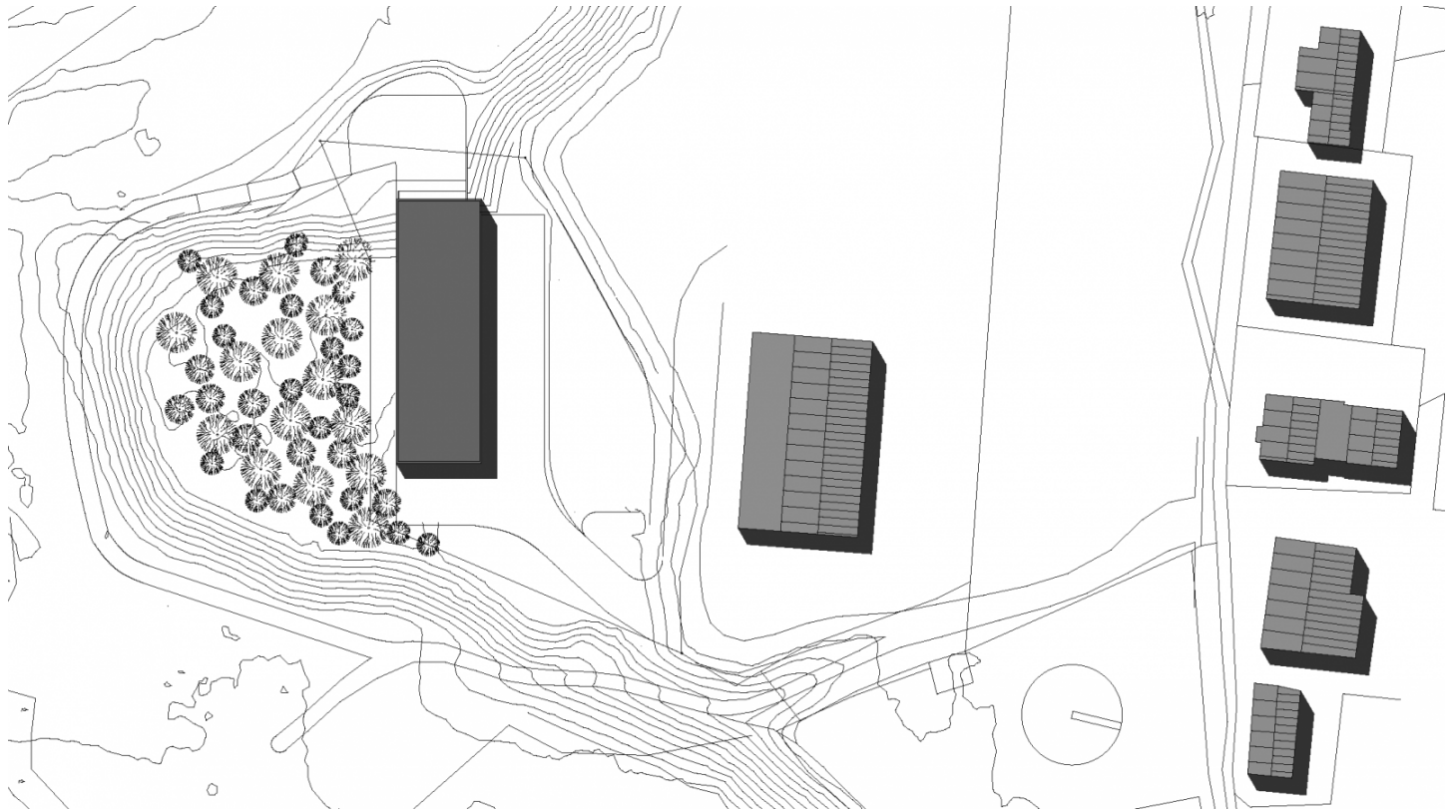
2007

Project facts

ÜBF 836 m², GFA 7.506 m²

A facade that unifies the purpose and the landscape.

The facilities at the Biomasseheizwerk all share the special location outside the village of Zug. Each part of the plant is tuned to the specific situation, that is, there is no uniform typology throughout the site. However, is the materialisation, the use of timber, which reflects the obvious functionality of the biomass heating plant. The natural timber, that forms a protective skin for the high-tech boiler system, demonstrates that timber is very well suited for this purpose and compliments the idea of using biomass for heating.



Project Stakeholders

Project Leader

Arch. DI Roland Wehinger
Paul Sinz, Vorarlberger
Kraftwerke, Bregenz

Colleague

Martin Rümmele

Building Site Manager

Bmst. Gerold Hämmerle

Structural Engineering

Mader & Flatz Ziviltechniker
GmbH, Bregenz

Rights

Text Hermann Kaufmann +
Partner ZT GmbH, Englisch:
Bronwen Rolls
Foto Hermann Kaufmann +
Partner ZT GmbH
Hermann Kaufmann

