



Project Information

Builder-Owner

Näscher Judith, Eschen /
Liechtenstein

Location

Eschen

Completion

2007

Projectfacts

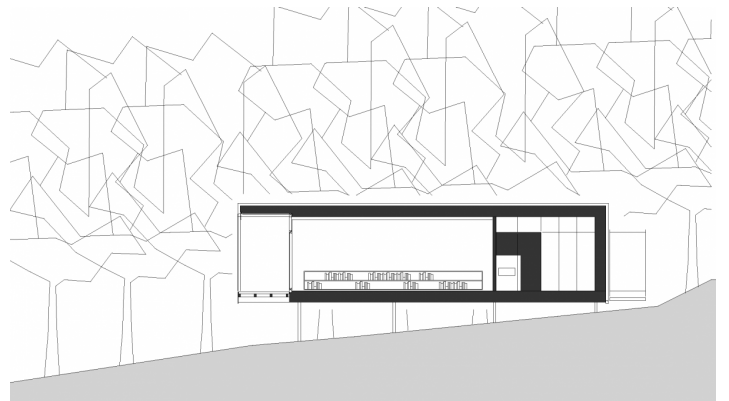
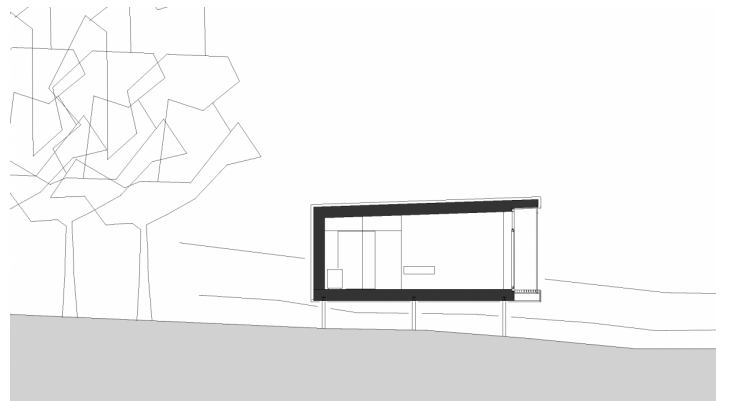
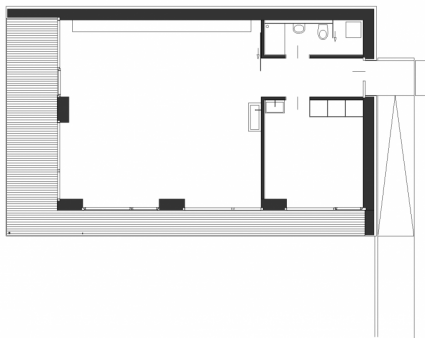
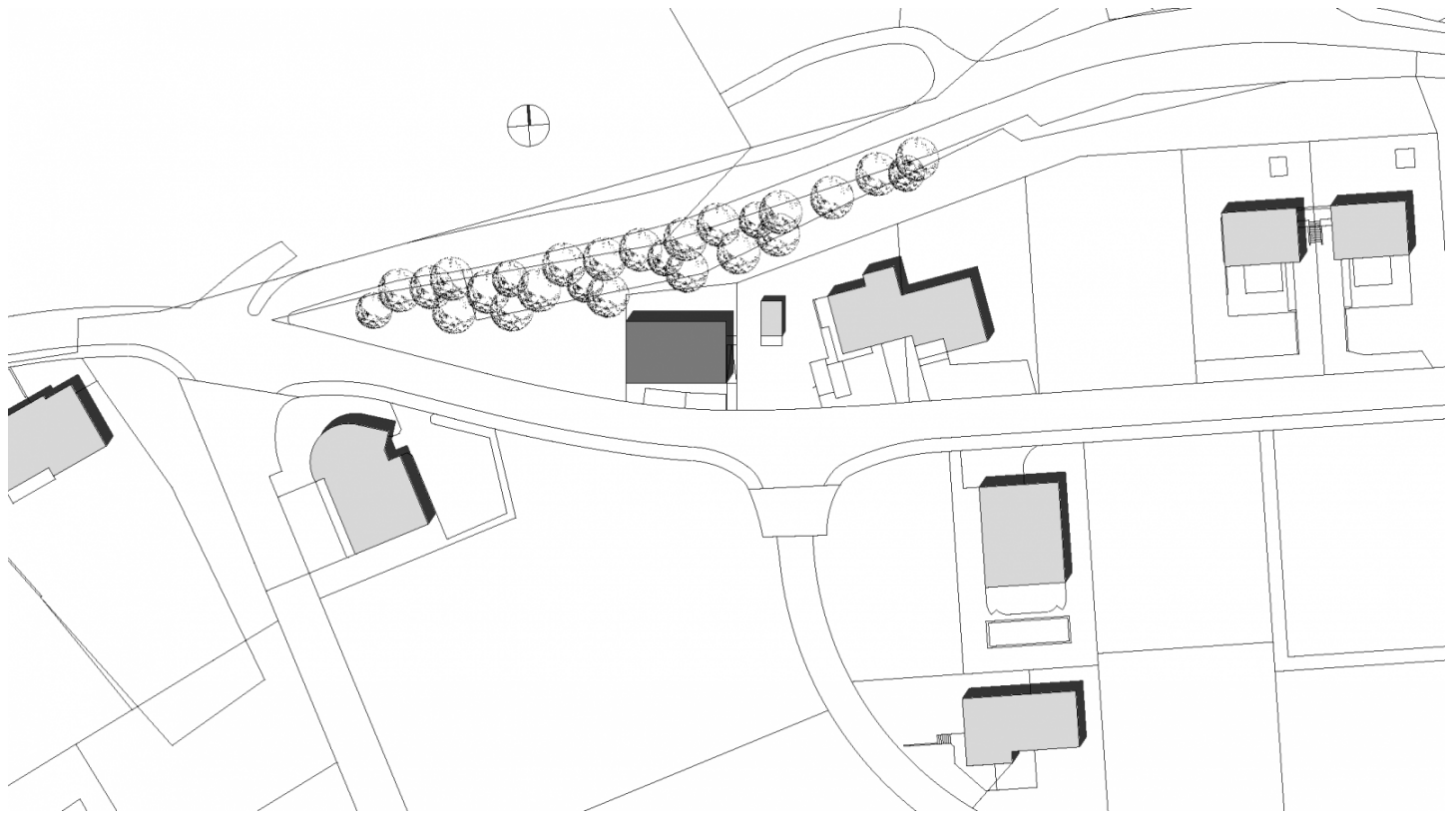
WNF 83,93 m², BGF 101,30 m²,
BRI 430,88 m³

An inexpensive, sustainable studio that works in harmony with the location.

A small, compact studio for an art therapist on a hillside with a fantastic view of the neighbouring mountain range. It was specified that the building should be built inexpensively and also meet Passive House construction standards. On a grid, this simple building was developed. It opens towards the view and closes to the north and east sides. The floor, walls and ceiling are made of thermally insulated multi-boxes, which are finished with OSB panelling on the interior side as a finished visible surface.

A skin of rubber tracks winds around this material skeleton as a protective weather cover. Due to the hillside location and the proximity to the residential street the building stands above the earth and the ground runs underneath it.





Project Stakeholders

Project Leader

DI (FH) Juliane Wiljotti

Building Site Manager

Zimmerei Franz Hasler, Bendern

Structural Engineering

Zimmerei Franz Hasler, Bendern

Heating Ventilation and

Sanitary Planning

Drexel und Weiß

Solarlufttechnik u. Lüftungsbau,

Wolfurt

Rights

Text Hermann Kaufmann +

Partner ZT GmbH, Englisch:

Bronwen Rolls

Foto Architekten Hermann

Kaufmann