



### Project Information

#### Builder-Owner

Sutterlüty Immobilien GmbH & Co  
KG, Egg

#### Location

Rankweil

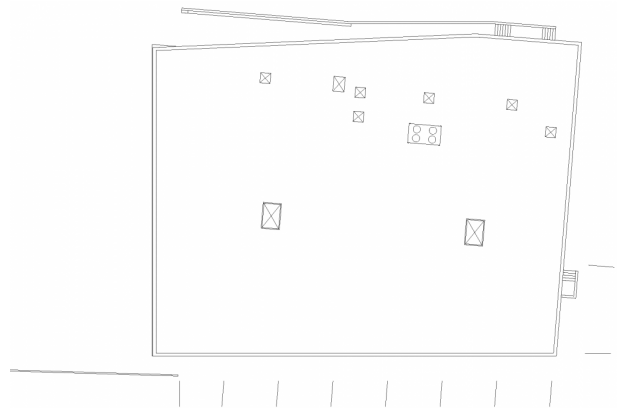
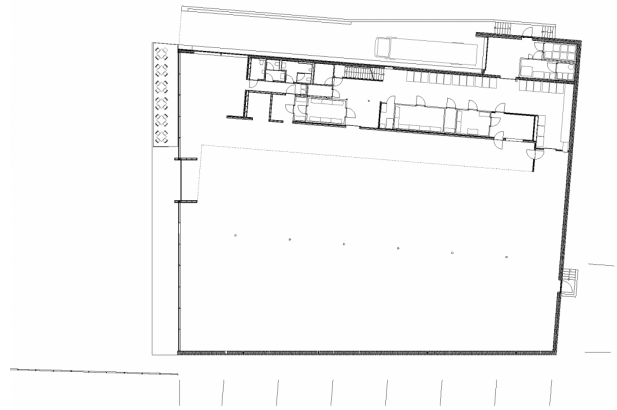
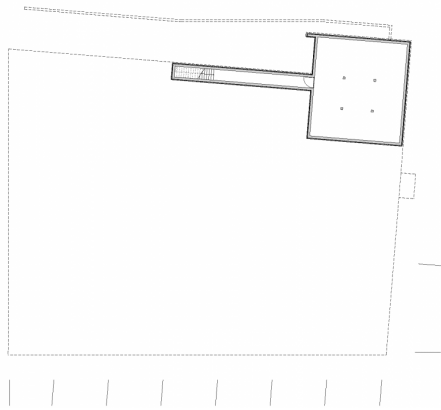
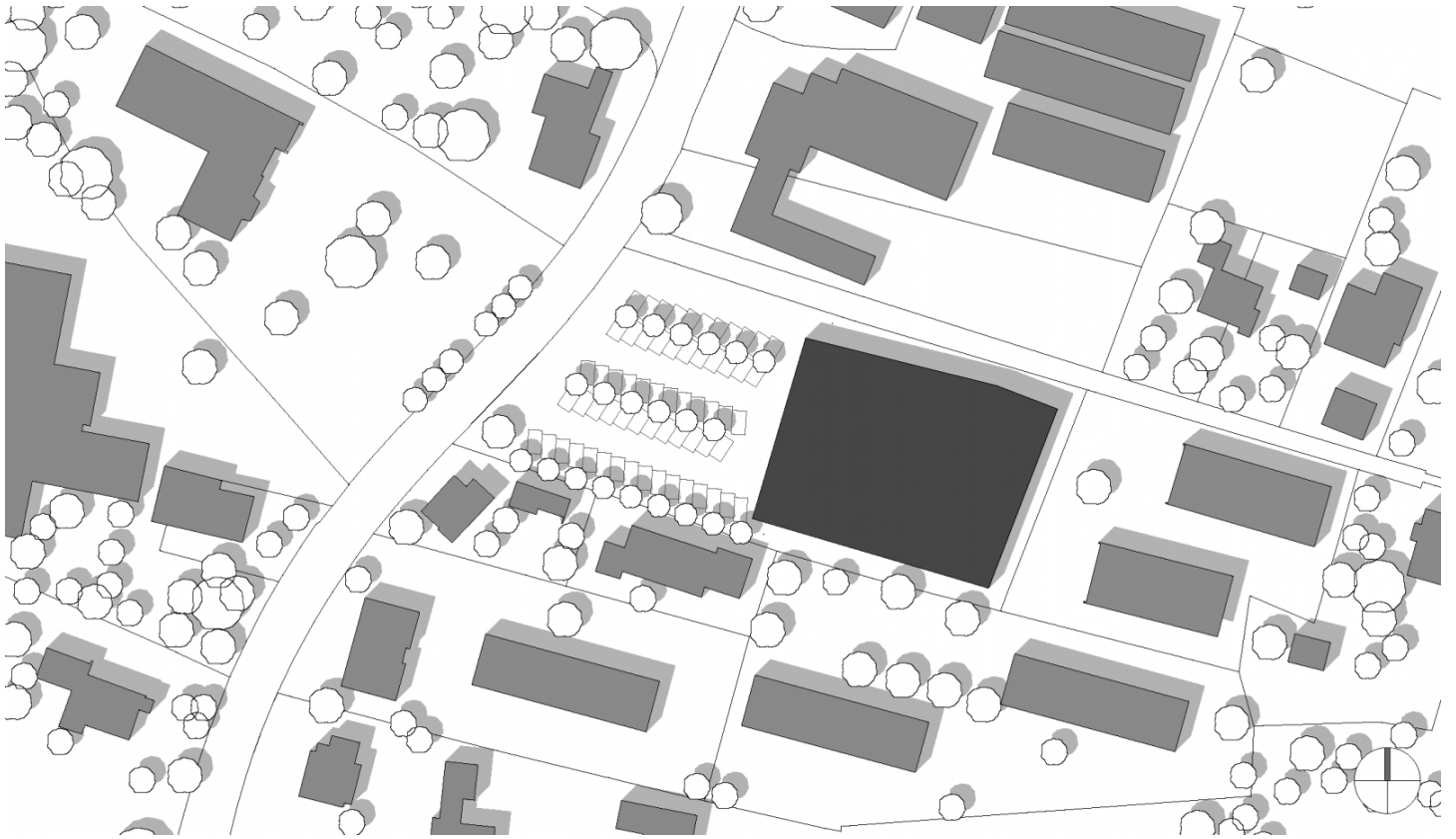
#### Completion

2014

#### Project facts

n.b.ar. 1.739 m<sup>2</sup>, GFA 1.908 m<sup>2</sup>,  
GBV 12.250 m<sup>3</sup>  
Energy 39 kWh/m<sup>2</sup>a





## Project Stakeholders

### Project Leader

DI Stefan Hiebeler

### Colleague

DI Christoph Dünser

DI Mathias Schädler

Ing. Benjamin Baumgartl

### Cost Planning

Bmstr. Ing. Schmelzenbach

Reinhard, Riefensberg

### Building Site Manager

Bmstr. Ing. Schmelzenbach

Reinhard, Riefensberg

### Structural Engineering

Mader & Flatz Ziviltechniker

GmbH, Bregenz

### Heating Ventilation and

### Sanitary Planning

BHM Ingenieure - Engineering -

Consulting GmbH, Feldkirch

### Electronics Planning

Elektrodesign Fröhle René,

Schlins

### Building Physics

DI Dr. Lothar Künz ZT GmbH,

Hard

### Landscape Planning

lohrer.hochrein

landschaftsarchitekten und

stadtplaner GmbH, München

## Rights

Foto Norman Radon