



## Project Information

Builder-Owner  
Bischof Hermann

Location  
Dornbirn

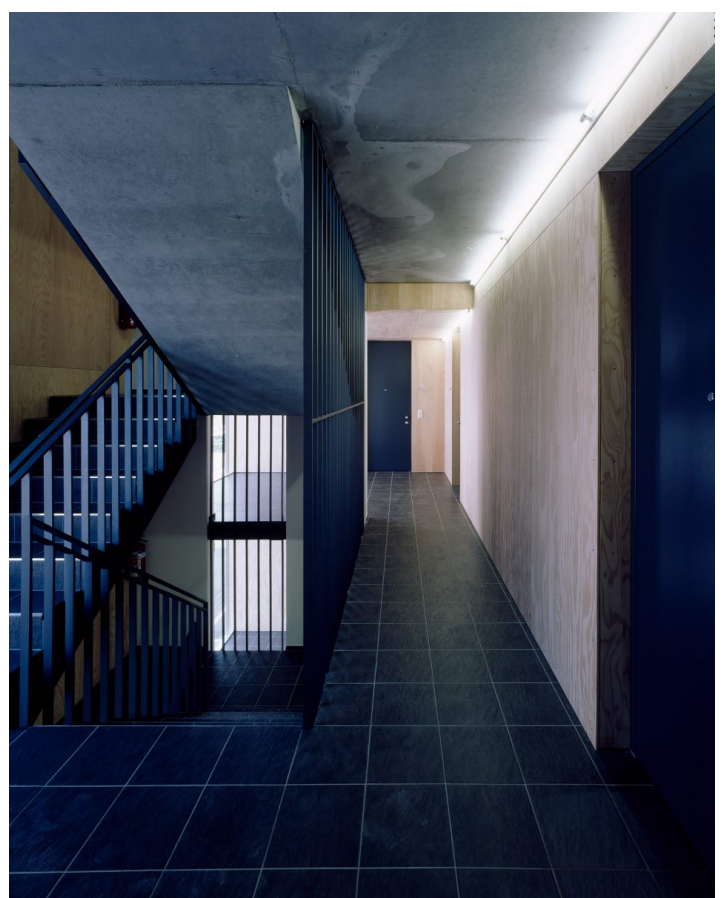
Completion  
2005

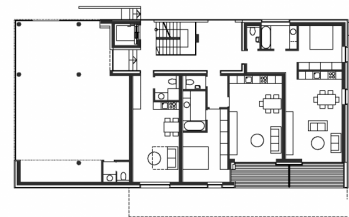
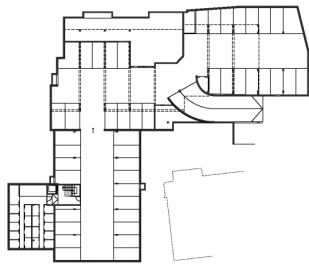
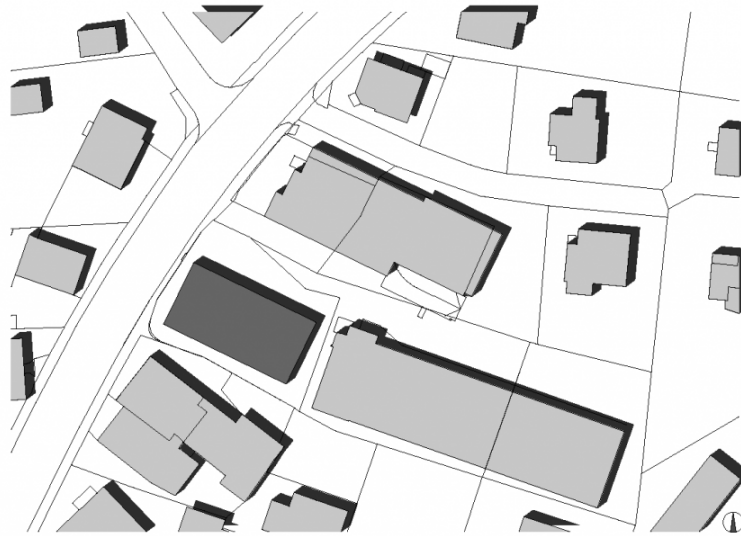
Project facts  
n.b.ar. 958,00 m<sup>2</sup>, GFA 1.195,60 m<sup>2</sup>

## A multi-use development in the centre of the city.

The property on the Hatlerstraße in Dornbirn is a residential building with 13 apartments and a commercial space on the ground floor. The apartments range between 30 m<sup>2</sup> and 121 m<sup>2</sup> (most of the apartments are 56 m<sup>2</sup>). All apartments have a balcony or terrace that are oriented to the south. Due to the location of the building on the busy Hatlerstraße the balconies have movable glass protective shields. The underground garage, in the basement, is designed for 18 parking spaces and is accessible via the car park of the neighbouring hotel.

The staircase core, the apartment partitions walls, and the ceilings are executed in reinforced concrete. The outer walls are non-load-bearing timber elements. The facade is made up of large fibre cement panels, attached to the front of the non-load bearing exterior walls.





## Project Stakeholders

### Project Leader

DI Stefan Hiebeler

### Colleague

DI Julia Nägele - Küng

DI Christoph Dünser

### Cost Planning

Bmst. Gerold Hämmerle

### Structural Engineering

GBD - Diem Schuler Pfefferkorn,

Dornbirn

### Heating Ventilation and

### Sanitary Planning

Moser Planungsbüro GesmbH,

Satteins

### Electronics Planning

Manuel Krekeler, Rankweil

## Rights

Text Hermann Kaufmann +

Partner ZT GmbH, Englisch:

Bronwen Rolls

Foto Bruno Klomfar