



Project Information

Builder-Owner

Wälderhaus Immobilien GesmbH,
Bezau

Location

Bezau

Completion

2002

Project facts

n.b.ar. 5.464,00 m², GFA 5.765,00 m²,
GBV 43.455,00 m³

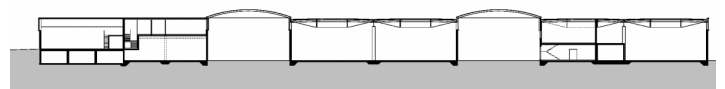
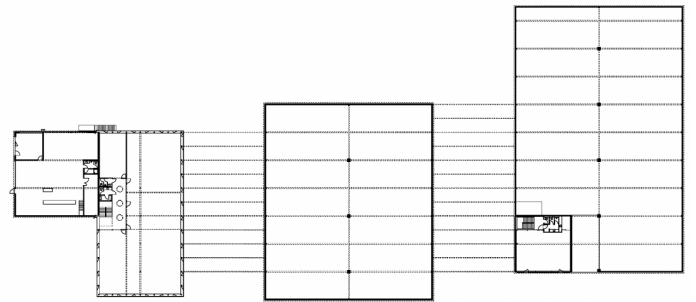
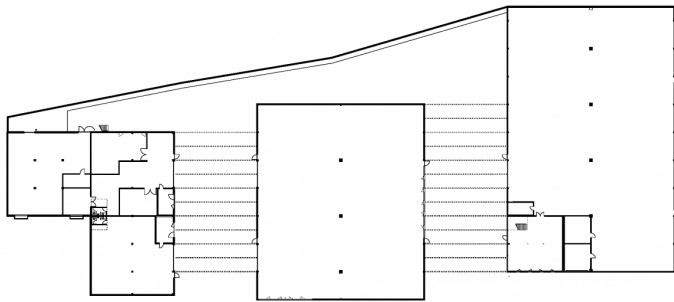
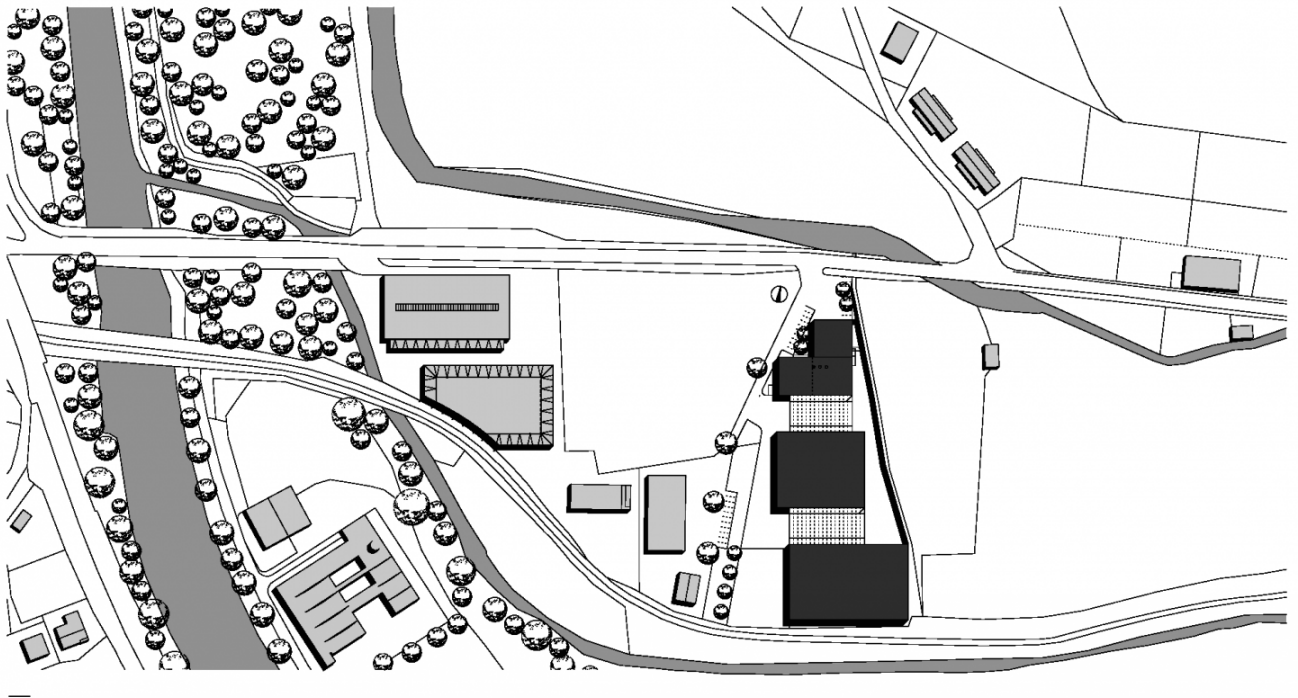
Offices, workshops, warehouses and sales space: an industrial complex made of wood, glass and steel – woven into the landscape.

Industrial and commercial parks are few and far between in Bregenzerwald, whose main source of revenue is agriculture. The design of new buildings is often left to chance, despite their impact on the natural landscape. This project, on the periphery of Bezau, benefitted from a previous intervention by Hermann Kaufmann, who had built the timber production halls in close vicinity to the new timber structure, Wälderhaus. The result of the two industrial complexes is a "timber city".

The aim of the design was to integrate the new volumes into the landscape using balanced forms and natural timber. Similar to the existing buildings, typical features of the new structure include the strip windows below the eaves and the timber skin extending almost all the way to the floor. The warehouses, production halls, metal workshop and offices are knitted into the large building, marked out only by window openings in the facade.

One L- and two square-shaped halls use a staggered arrangement in response to the shape of the plot. The halls are connected by vaulted shed roofs, partially glazed and made of steel to meet fire protection requirements. The vaulted roofs span between the building masses, without over-exaggerating the dimensions of the composition. As a result of the terrain, from the village the plant appears even lower, leaving the view of the landscape below the vaulted roofs unobstructed.





Project Stakeholders**Project Leader**

Bmst. Ing Norbert Kaufmann

Colleague

Wolfgang Hammerer

DI Simone Roos

Cost Planning

Bmst. Ing Norbert Kaufmann

Structural Engineering

DI Stefan Krauss, Bad Breisig

Heating Ventilation and**Sanitary Planning**

Planungsteam E-Plus GmbH,

Egg

Electronics Planning

Ing. Willi Meusburger, Bezau

Rights

Text Otto Kapfinger

"Hermann Kaufmann Wood

Works", Englisch: Bronwen

Rolls

Foto Ignacio Martinez