



## Project Information

### Builder-Owner

Antonia und Wolfgang Moosbrugger  
Moosbrugger

### Location

Bizau

### Completion

2009

### Project facts

NGF 879 m<sup>2</sup>, BGF 1.80 m<sup>2</sup>,

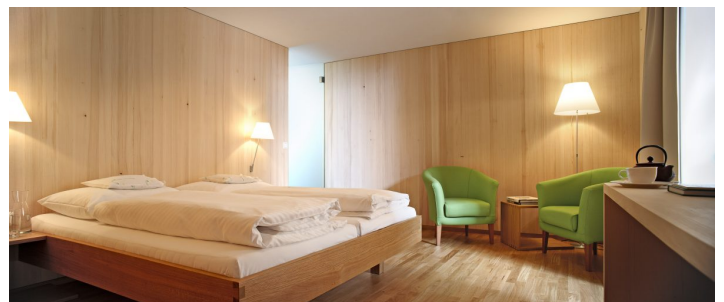
BRI 3.323 m<sup>3</sup>

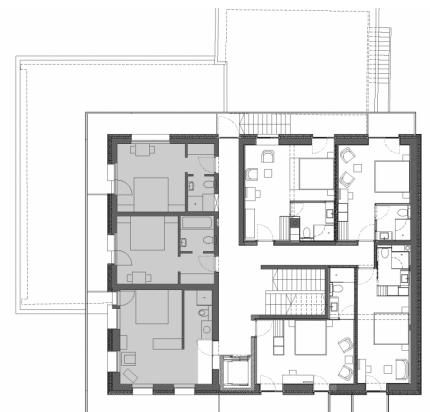
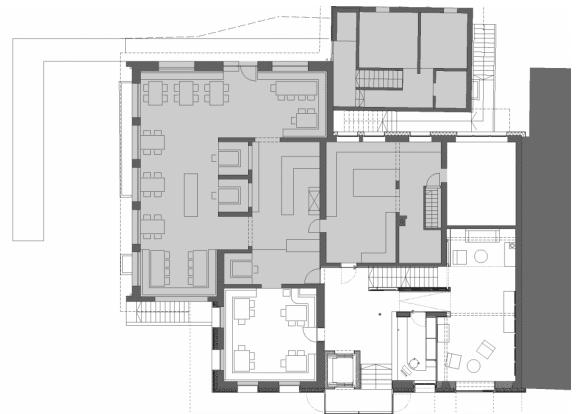
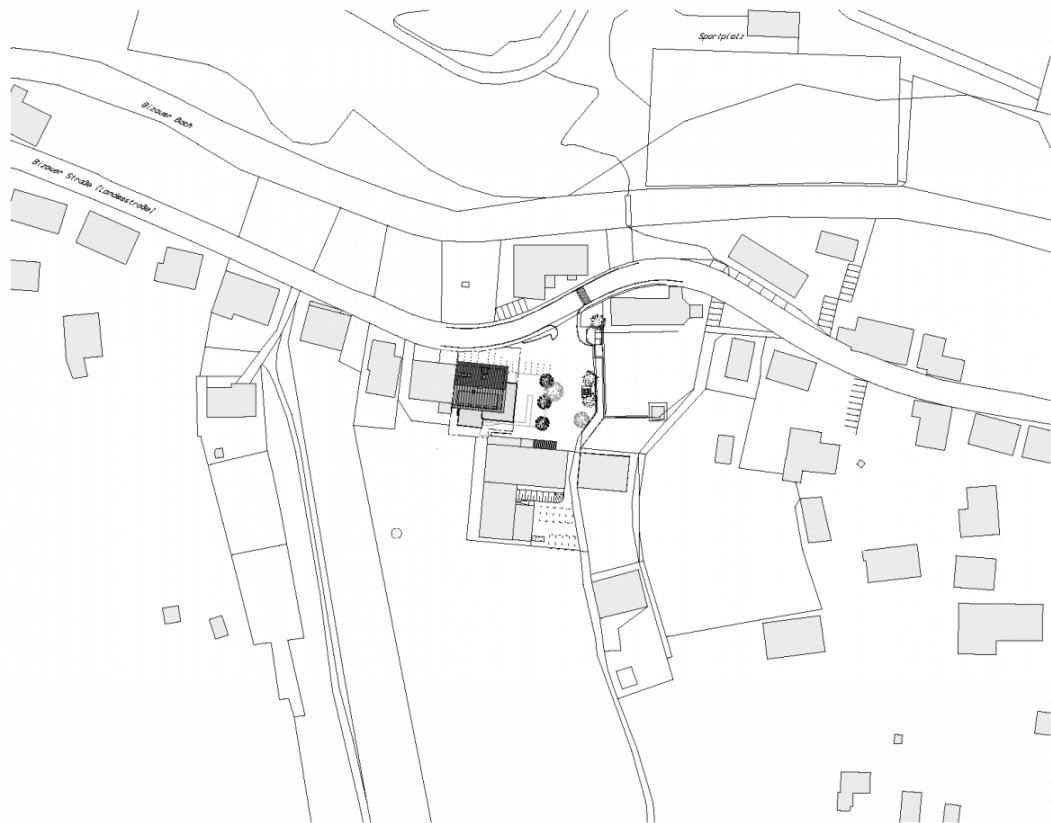
Energie 40 kWh/m<sup>2</sup>a

## Renovations that increase a hotels appeal and suitability to the surroundings.

The Hotel Schwanen was originally a traditional country inn, a lengthways building with integrated agricultural parts. This was completely remodelled in the 60s. What was left of the old space was converted into a small hotel with 40 beds. From the two-and-a-half-story farmhouse hotel, a partially plastered, three-storey solid construction was based on an approximately square floor plan. Both materialisation and design did not match either the location or its tradition. A renovation had become necessary, one that would rejuvenate functionality, energy efficiently and reincorporate the hotel back into its location.

The building was newly insulated and clad with natural spruce timber. A continuous layer of balconies with closed timber balustrades give the building a cubic form, an answer to the traditional house style of the Bregenzerwald. The entrance area has been reorganised, and a new lift makes the hotel accessible on every floor. The rooms themselves were partly modernised, changed in their formation and adapted to today's needs. Although this reduced the number of beds slightly, it has increased the numbers of rooms sold. The design deliberately retreats and is dominated by mute surfaces of timber and plaster. The natural white spruce cladding, doors and furniture in combination with oiled oak floors and beds, create a very homelike and unobtrusive atmosphere that sets the hotel apart.





## Project Stakeholders

### Project Leader

Dipl. Arch. (FH) Claudia Greussing

### Colleague

BM DI Eugen Keler

### Cost Planning

Bmst. Gerold Hämmerle

### Building Site Manager

Bmst. Gerold Hämmerle

## Project Stakeholders

### Structural Engineering

Mader & Flatz Ziviltechniker  
GmbH, Bregenz

### Heating Ventilation and

### Sanitary Planning

Martin Fink - Wasser, Wärme,  
Solar, Bezau

### Heating Ventilation and

### Sanitary Planning

Dietrich Luft + Klima GesmbH,  
Lauterach

### Electronics Planning

Willi GesmbH & Co KG,  
Andelsbuch

### Building Physics/Acoustics

Dipl. Ing. Bernhard Weithas  
GmbH, Hard

### Lighting Planning

Zwicker AG Licht, St. Gallen

## Rights

Text Hermann Kaufmann +

Partner ZT GmbH

Foto Adi Bereuter

